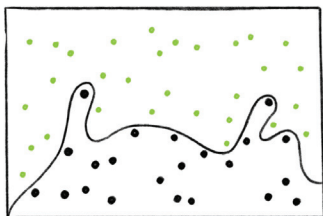
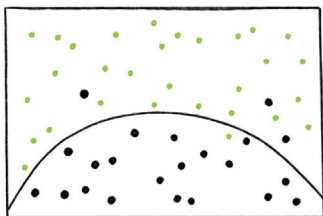


# OVERFITTING

OVERFITTING



JUST RIGHT



*A more complex explanation will often describe your data better than a simple one. However, a simpler explanation is usually more representative of the underlying relationship.*



When looking at data, you'll want to understand what the underlying relationships are. To do this, you create a model that describes them mathematically. The problem is that a more complex model will fit your initial data better than a simple one. However, they tend to be very brittle: They work well for the data you already have, but try too hard to explain random variations. Therefore, as soon as you add more data, they break down. Simpler models are usually more robust and better at predicting future trends.

